



Citrus Health Response Program Update March 2009

Gulf Citrus Growers Association (GCGA) - Asian Citrus Psyllid (ACP) Area-Wide Spray Program

DPI, through the CHRP, is assisting the GCGA and the University of Florida/ Institute of Food & Agriculture Sciences with a program that involves spraying the outer boundaries and working inward of the GCGA's commercial citrus areas. The CHRP component of the program involves scouting and conducting pre- and post-treatment psyllid counts. The program began in November 2008 with pre-spray psyllid surveys and continued through February with aerial and ground spraying, and post-spray surveys.



Photo: Jeffrey Lotz, DPI

Survey Area:

- ✓ 132 blocks in 32 groves
- ✓ 10 stops made in each block (5 on borders and 5 inside)
- ✓ At each stop, 10 trees sampled

Pre-spray Survey Data (averages):

- ✓ 9 ACP adults were detected per 100 tap samples*
- ✓ 13% of trees had ACP-infested flush
- ✓ 20% of trees had citrus greening symptoms

Spraying Activities:

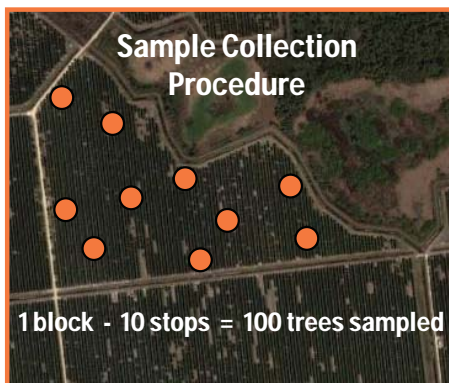
- ✓ 77,000 acres (34 groves) sprayed by air
- ✓ 4,000 acres (5 groves) sprayed by ground

Post-spray Preliminary Results:

- ✓ 88% reduction of psyllids by aerial spraying (compared to unsprayed groves)
- ✓ 71% reduction of psyllids by ground spraying (compared to unsprayed groves)

Next Steps:

- ✓ Post-bloom counts
- ✓ Further evaluation of survey results



*Psyllid counts are made using a method called tap sampling. A branch from each sample tree is tapped using a piece of PVC pipe to knock any psyllids present onto a board. The number of psyllids is recorded. Also recorded are other insects, including beneficial ones, that fall from the tree.



Photos: UF/IFAS

Summary of Activities through February 2009

Activity	December	January	February	FY Total*
Multi-pest survey (MPS) #4	7,225 acres	7,789 acres	4,147 acres	53,428 acres
Fresh fruit survey	1,318 acres	1,355 acres	1,178 acres	33,412 acres
Grower requested survey	358 acres	900 acres	604 acres	11,473 acres
Nursery environs survey				
- commercial	1,403 acres	0 acres	435 acres	4,353 acres
- residential				3,151 properties
Fresh fruit applications			2	444**
Harvesting permits issued	240	154	240	4,167

*FY 7/1/08 - 6/30/09

Total includes 46 fresh fruit applications received in June

** Number has been revised to reflect current information



Abandoned Grove Survey Program Update

- ✓ 8,444 multi-blocks to be surveyed
- ✓ 7,500 completed as of 3/31/09
- ✓ 342 current Compliance Agreements
- ✓ 1,448 delinquent Compliance Agreements

Next steps after completing surveys are to begin contacting abandoned grove property owners to explain the need to remove abandoned grove trees as part of the CHRP, and to explain the property tax incentives if appropriate action is taken.

Grower Services - How can we help?

- ✓ **Supplemental Surveys:** scout for pests and diseases upon grower request, as resources permit
- ✓ **Fresh Fruit Surveys:** export to the European Union
- ✓ **Disease Recognition Training:** identify citrus canker, HLB, CVC and citrus leprosis
- ✓ **Self-Survey Training:** plan, execute and document surveys
- ✓ **Decontamination Training:** learn proper mixtures and application
- ✓ **Train-the-Trainer:** improve and customize training programs one-on-one

For survey and training services, please contact your local CHRP office

www.doacs.state.fl.us/pi/contacts.html

or the DPI Helpline

1-800-282-5153