

## BOTANY SECTION

Compiled by Richard E. Weaver, Jr., Ph.D., and Patti J. Anderson, Ph.D.

For this period, 81 specimens were submitted to the Botany Section for identification, and 795 were received from other sections for identification/name verification, for a total of 876. In addition, 163 specimens were added to the herbarium. Some of the samples received for identification are discussed below:

*Ageratina jucunda* (Greene) Clewell & Woot. (A genus of about 290 species mainly native to the eastern United States and warm regions of the Americas.) Compositae/Asteraceae. **Hammock**



**snakeroot.** This fall-flowering perennial grows 40–80 cm tall with an erect, minutely pilose stem. The narrowly elliptic to deltoid, 2–6 cm long, opposite leaves are usually glabrous and have crenate to serrate margins. The flower heads contain clusters of white or pinkish-white disc flowers, but no ray flowers. Even without ray flowers, this species provides a stunning display with white clouds of color in the sandhills and hammocks of Georgia and peninsular Florida. Hammock snakeroot, the common name for this species, suggests both its

habitat preference for hammocks and the use of members of the genus as a cure for snakebites by indigenous people. (Hillsborough County; B2008-8; Jason B. Sharp; 7 January 2008) (Austin 2004; Mabberley 1997; <http://www.efloras.org>)

*Calophyllum inophyllum* L. (A genus of 187 tropical species.) Guttiferae/Clusiaceae. **Alexandrian laurel, beauty-leaf.** This evergreen tree with sticky, yellow latex, is usually 12-15 m in height, but can reach 20 m. The glossy, green, leathery, opposite, simple, 20 x 12 cm leaves have a prominent midrib and distinctive, closely-spaced secondary veins. The inflorescence is an axillary raceme, with five to ten fragrant white flowers, each 2-2.5 cm across. The fruits are more or less globose, 2.5-4 cm long, one-seeded drupes. This salt tolerant native of tropical regions (from eastern Africa through the western Pacific) is planted as an ornamental tree in Hawaii, South Florida and other coastal areas.



*Calophyllum inophyllum*  
Photograph courtesy of Forest and Kim Starr.

Unfortunately, it has escaped from cultivation in Florida and Hawaii.

The wood has been used to build canoes and boats and for fine carpentry. The seeds, leaves and latex are reputedly toxic, and like many toxic plants, are used medicinally—presumably, at a lower dose. (Palm Beach County; B2008-45; Alfred M. Levy, USDA; 28 January 2008) (Dehgan 1998; Nelson *et al.* 2007; Staples and Herbst 2005; Wunderlin and Hansen 2003)

*Coreopsis basalis* (A. Dietr.) Blake. (A genus of 50 American species.) Compositae/Asteraceae.

**Goldenmane tickseed.** This genus is familiar to Floridians as the symbol on the specialty license plate depicting the state wildflower, the 30<sup>th</sup> most popular license plate from among the 109 available in 2007. Introduced from Texas throughout the southeastern United States, this spring-flowering annual species can be found along roadsides, open pastures and disturbed places. The stem ranges from 10–50 cm in height. The medium green leaves may be simple or pinnately lobed. Like other members of this genus, *C. basalis* has two series of involucre bracts, with the inner bracts longer than those in the outer series. Ray flowers are yellow, with a distinctive red-brown to

purple band surrounding the brown or purple disc flowers. This attractive species has been planted along highways and can be sown with no special preparation in well-drained, sandy soil, returning each year through self-seeding. Several members of this genus have been used as dyes, leading to another common name, “dye flower.” (Manatee County; B2008-64; Karen ‘Lea’ Etchells; 10 February 2008) (Norcini and Aldrich 2004; <http://www.efloras.org>; <http://www.hsmv.state.fl.us/specialtytags>)

*Jasminum nitidum* Skan. (A genus of about 200 tropical species and a few temperate ones.) Oleaceae.

**Star jasmine, angel wing jasmine.** This evergreen twining or scrambling vine can be pruned to produce a shrub. As a woody vine, this species can reach 6 m in length, but trained as a shrub, it rarely grows more than 1 m tall. The leathery, opposite leaves are glossy green (*nitidum* means “shining” in Latin) and usually 8-10 cm long by 3-5 cm wide. The fragrant, white, narrow-petaled flowers start as pinkish purple buds, and the persistent calyxes maintain their color. This jasmine blooms at night from late spring and throughout the summer in areas with frost, but almost all year in South Florida. The fruit is a berry. Propagation is usually by cuttings because fruits rarely develop in cultivation. Native to Admiralty Islands, this plant grows well in full sun or partial shade. (Miami-Dade County; B2008-50; Juan L. Garcia Lopez; 4 February 2008). (Dehgan 1998; Llamas 2003; <http://www.floridata.com/>; <http://toptropicals.com>)



*Jasminum nitidum*  
Photograph courtesy of TopTropicals

*Stellaria media* (L.) Vill. (A genus of 150 to 200 cosmopolitan species.) Caryophyllaceae. **Common chickweed.** This species is a winter annual with trailing or weakly ascending 10-80 cm long stems characterized by a band of pubescence along one side. These stems root at the nodes to form mats in lawns. The opposite leaves are ovate to elliptic, usually 1-3 cm long and 0.8-1.5 cm wide, with ciliate petioles to 2 cm long on lower leaves, while the upper leaves are sessile. The flower pedicels are reflexed or recurved, and the 3.5-6 mm long sepals have villous hairs. The five petals are slightly shorter than the sepals and cleft, such that they appear to be ten paired petals. The fruit is a many-seeded, ovoid, capsule, 3.5-7 mm long. The reddish brown seeds are 1-1.1 mm long. Although the plant is native to Eurasia, it has become naturalized around the world and is found in waste places, fields and gardens, and along roadsides. Chickens are said to eat the plant, and wild-food proponents recommend it for the human diet. (Columbia County; B2008-3; W. Wayne Bailey; 4 January 2008). (Murphy 1996; Agricultural Research Service 1971; <http://www.hear.org>; <http://www.wildmanstevebrill.com>)



*Zanthoxylum beecheyanum* K. Koch (A genus of about 250 species from the Americas, Africa, Asia and Australia.) Rutaceae. **Chinese pepper, hua jiao, sensu.** This dense, rounded shrub or small tree to 2 m tall with brownish bark has small, paired pseudostipular spines subtending the 2.5-6.5 cm long, odd-pinnately compound leaves. Each leaf has up to 15 glossy, green, entire, ovate 4-10 mm long leaflets with evenly spaced glands along the margins. The inflorescences are axillary fascicles of 1-2 mm yellow to green flowers with pistillate and staminate flowers on separate plants. Each globose, 3-4 mm in diameter fruit contains a single shiny black seed. The common

name, Chinese pepper, is shared with several *Zanthoxylum* species and suggests its culinary use. Although this species shares the spicy “ma” flavor of *Z. piperitum* and *Z. simulans*, it is not as widely cultivated. All three species share the common names Chinese pepper, Szechuan or Sichuan pepper and Japanese pepper, with any one of the species sold as the spice-demonstrating the difficulty of linking common names and botanical species. This plant is native to southern Japan and has become an ornamental in coastal gardens of Hawai’i. With its diminutive leaflets and flowers, the plant has found favor with bonsai enthusiasts where it is trained in upright, slanting or semi-cascade styles. Although seeds are viable, the plant is usually propagated vegetatively. Unfortunately for growers in Florida, importing any part of the plant, other than fruits or seeds, is regulated to prevent the spread of citrus diseases. Most of the plants already in Florida have been illegally imported. (Miami-Dade County; B2008-38; Yondorka Aguilera; 29 January 2008). (Staples and Herbst 2005; van Wyk 2005; Walker 1976; <http://www.makebonsai.com>)

## REFERENCES

- Agricultural Research Service, United States Department of Agriculture. 1971. Common weeds of the United States. Dover Publications. New York, New York. 463 p.
- Austin, D.F. 2004. Florida ethnobotany. CRC Press. Boca Raton, Florida. 909 p.
- Dehgan, B. 1998. Landscape plants for subtropical climates. University Press of Florida. Gainesville, Florida. 638 p.
- Llamas, K.A. 2003. Tropical flowering plants: a guide to identification and cultivation. Timber Press. Portland, Oregon. 423 p.
- Mabberley, D.J. 1997. The plant book, 2nd edition. Cambridge University Press. Cambridge, England. 858 p.
- Murphy, T.R. 1996. Weeds of Southern turfgrasses. Florida Cooperative Extension Service, Institute of Food and Agricultural Sciences, University of Florida. Gainesville, Florida. 208 p.
- Nelson, L.S., R.D. Shih and M.J. Bailick. 2007. Handbook of poisonous and injurious plants, 2nd edition. Springer Science Media. New York, New York. 340 p.
- Norcini, J.G. and J. H. Aldrich. 2004. Establishment of native wildflower plantings by seed. Florida Cooperative Extension Service, Institute of Food and Agricultural Sciences, University of Florida. Gainesville, Florida. 11 p.
- Staples, G.W. and D.R. Herbst. 2005. A tropical garden flora: plants cultivated in the Hawaiian Islands and other tropical places. Bishop Museum Press. Honolulu, Hawaii. 908 p.
- Van Wyk, B. 2005. Food plants of the world: an illustrated guide. Timber Press. Portland, Oregon. 480 p.
- Walker, E.H. 1976. Flora of Okinawa and the southern Ryukyu Islands. Smithsonian Institution Press, Washington, D.C. 1,159 p.
- Wunderlin, R. P. and B. F. Hansen. 2003. Guide to the vascular plants of Florida, 2nd edition. University Press of Florida. Gainesville, Florida. 787 p.

Unless otherwise noted, all photographs are generously provided by the Institute for Systematic Botany, Atlas of Florida Vascular Plants: <http://www.plantatlas.usf.edu>.

## Entomology Section Compiled by Susan E. Halbert, Ph.D.

For the month of January, there were 454 samples, consisting of 19,677+ specimens. In February, there were 554 samples, consisting of 21,364+ specimens. Some of the samples are listed below:

### ORNAMENTALS, WOODY PLANTS AND PALMS:

*Calliandra haematocephala* (powderpuff) -- *Paraleyrodes pseudonaranjae* Martin, a **whitefly**: A severe infestation was found on a plant at a residence in Fort Myers (Lee County; E2008-484; Patricia L. McMackins, USDA/APHIS/PPQ; 1 February 2008). NEW DPI HOST RECORD.

*Washingtonia robusta* (Washingtonia palm, skyduster) -- *Raoiella indica* Hirst, **red palm mite**: A moderate infestation was found on one plant at a residence in Lake Worth (Broward County; E2008-159; Heidi M. Bowman and Karolynne M. Griffiths, both USDA/APHIS/PPQ, Marjorie A. Hoy, University of Florida, and Michael E. Meadows; 9 January 2008). NEW DPI HOST RECORD.

### ORNAMENTALS, FOLIAGE PLANTS:

*Ceropegia woodii* (string-of-hearts) -- *Abgrallaspis cyanophylli* (Signoret), **cyanophyllum scale**: A moderate infestation was found at a nursery in Apopka (Orange County; E2008-168; Katherine A. Gonzalez; 9 January 2008). NEW DPI HOST RECORD.

### ORNAMENTALS, FLOWERING PLANTS:

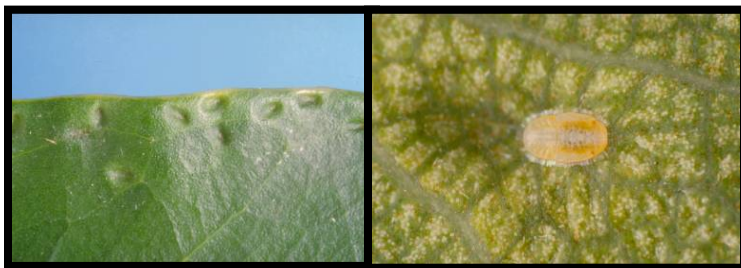
*Alpinia purpurata* (red ginger, red cone ginger) -- *Maconellicoccus hirsutus* (Green), **pink hibiscus mealybug**: A moderate infestation was found on ten plants at a residence in Miami (Miami-Dade County; E2008-24; Olga Garcia; 28 December 2007). NEW DPI HOST RECORD.

*Alpinia zerumbet* (shell ginger, pink porcelain lily, shellplant) -- *Raoiella indica* Hirst, **red palm mite**: A moderate infestation was found on ten plants at a residence in Fort Lauderdale (Broward County; E2008-669; Karolynne M. Griffiths, USDA/APHIS/PPQ; 4 February 2008). NEW DPI HOST RECORD.

*Hibiscus* sp. (hibiscus) -- *Aceria hibisci* (Nalepa), **hibiscus eriophyid**: A severe infestation was found at a resort in Kingston, Jamaica (E2008-194; Gregory A. Evans, USDA/APHIS/PPQ, Lyle J. Buss, University of Florida and Greg S. Hodges; 11 January 2008). NEW RECORD FOR JAMAICA.

### FOREST AND SHADE TREES:

*Ficus aurea* (Florida strangler fig) -- *Trioza russellae* Tuthill group, **strangler fig psyllid**: A slight infestation was found on a plant at a residence in Jupiter (Palm Beach County; E2008-454; Julieta Brambila, USDA/APHIS/PPQ; 29 January 2008). NEW DPI COUNTY RECORD.



**Damage and nymph of *Trioza russellae* group on *Ficus aurea*.**  
Photographs courtesy of Jeff Lotz, DPI.

*Ficus citrifolia* (short-leaved fig, wild banyan tree) -- *Hemerophila diva* (Riley), **Riley's metalmark moth**: A moderate infestation was found on several plants at the IFAS Ft. Lauderdale Research and Education Center (Broward County; E2008-75; Bryan Steinberg, University of Florida; November 2007). NEW DPI COUNTY RECORD.

*Magnolia grandiflora* (southern magnolia) -- *Rhynacus breitlowi* Davis, **an eriophyid mite**: An infestation was found at the Austin Cary Memorial Forest in Gainesville (Alachua County; E2008-509; Patti J. Anderson; 2 February 2008). NEW DPI COUNTY RECORD.

### FOOD AND CROP PLANTS:

*Carica papaya* (papaya) -- *Calacarus flagelliseta*? Flechtmann *et al.*, **an eriophyid mite**: A slight infestation was found on a plant at a residence in Tamarac (Broward County; E2008-778; George N. Louissaint, USDA/APHIS/PPQ; February 2008). NEW DPI HOST RECORD. If confirmed, this will be a new state record for Florida. This mite is a key pest on papaya in Hawaii and has been reported from Brazil. Feeding by this mite can cause severe upward rolling of the leaves followed by leaf necrosis. Two other *Calacarus* species on papaya can cause leaf bronzing or edge rolling and white spots (Dr. W.C. 'Cal' Welbourn).

*Mangifera indica* (mango) -- *Cisaberoptus kenyae* Keifer, **eriophyid mites**: A severe infestation was found at a residence in Cooper City (Broward County; E2007-8816; William A. Thiel, USDA/APHIS/PPQ; 25 November 2007). NEW USA CONTINENTAL RECORD. *Cisabroptus kenyae* originally was described from Kenya specimens. The taxonomic placement of this species still is being reviewed, but regardless of the final status, the species is new to the United States and to Florida. Of the 18 worldwide eriophyid species reported from mango, Florida now has five (Dr. W.C. 'Cal' Welbourn).

*Musa* sp. (banana) -- *Tetranychus mexicanus* (McGregor), **a spider mite**: A slight infestation was found on plants at DPI in Gainesville (Alachua County; E2007-9383; Cheryl A. Jones; 18 December 2007). NEW DPI HOST RECORD.

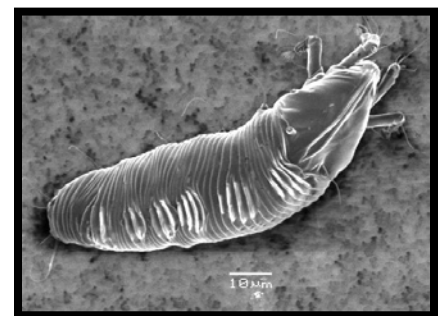
*Psidium guajava* (common guava, apple guava) -- *Greenidea psidii* van der Goot, **Asian guava aphid**: A slight infestation was found at the University of the West Indies, Mona, Saint Andrew Parish, Jamaica (E2008-229; Lyle J. Buss, University of Florida; 10 January 2008). NEW RECORD FOR JAMAICA. This Asian species, which colonizes Myrtaceae and *Ficus* spp., is established in Florida, California and parts of South America and Mexico (Dr. Susan E. Halbert).

### WEEDS AND GRASSES:

*Distichlis spicata* (saltgrass; seashore saltgrass; inland saltgrass) -- *Acunda plectilis* Keifer and *Aceria distichli* Keifer, **eriophyid mites**: An infestation was found near a bridge in Cedar Key (Levy County; E2008-411; Patti J. Anderson; 26 January 2008).

Both finds are NEW FLORIDA STATE RECORDS. *Acunda plectilis* and *Aceria distichli* were both described from California and until this find were not reported outside that state. *Acunda plectilis* inhabits the terminal rolled leaves and *A. distichli* lives between the leaf sheaths. Neither mite is reported to cause damage to the host. (Dr. W.C. 'Cal' Welbourn).

*Hygrophila polysperma* (hygro, East Indian hygrophila, Indian swampweed, Miramar weed) -- *Phenacoccus solani* Ferris, **Solanum mealybug**: Specimens were extracted in a Berlese



*Acunda plectilis*

Photograph courtesy of W.C. 'Cal' Welbourn, DPI

funnel from material from a roadside ditch near Miles Creek (Pinellas County; E2008-588; Abhishek Mukherjee, University of Florida student; 10 December 2007). NEW DPI HOST RECORD.

*Ludwigia octovalvis* (Mexican primrose-willow) -- *Desmia deploralis* Hampson, **a pyralid moth**: A slight infestation was found at the IFAS Ft. Lauderdale Research and Education Center (Broward County; E2008-863; Bryan Steinberg, University of Florida; January 2008). NEW DPI HOST RECORD.

*Melaleuca quinquenervia* (melaleuca, cajeput, punktree, paperbark tree) -- *Boreioglycaspis melaleucae* Moore, **melaleuca psyllid**: A moderate infestation on all of 50 plants was found at a nursery in Okeechobee (Glades County; E2008-619; Mark R. Terrell; 31 January 2008). NEW DPI COUNTY RECORD.

*Ruellia brittoniana* (Mexican petunia) -- *Paraleyrodus pseudonaranjae* Martin, **a whitefly**: A moderate infestation was found at a location in Naples (Collier County; E2008-744; Doug L. Caldwell, Agriculture Extension Agent; 12 February 2008). NEW DPI HOST RECORD.

*Senecio* sp., (probably senecio, groundsel or ragwort) -- *Tetranychus kanzawai* Kashida, **a spider mite**: A moderate infestation was found at a nursery in Zellwood (Orange County; E2008-173; Katherine A. Gonzalez; 9 January 2008). NEW DPI HOST RECORD.



*Boreioglycaspis melaleucae* on melaleuca leaves.  
Photograph courtesy of Susan E. Halbert, DPI

*Spartina alterniflora* (saltmarsh cordgrass, smooth cordgrass) -- *Ogmotaronemus erepsis* Lindquist, **a tarsonemid mite**: An infestation was found near a bridge in Cedar Key (Levy County; E2008-412; Patti J. Anderson; 26 January 2008). NEW DPI COUNTY RECORD.

*Spermacoce verticillata* (shrubby false buttonweed) -- *Aceria* sp., **an eriophyid mite** and *Brevipalpus russulus* (Boisduval), **false spider mite**: An infestation was found along a roadside in Florida City (Miami-Dade County; E2008-470; Julieta Brambila, USDA/APHIS/PPQ; 24 January 2008). Both finds are NEW DPI HOST RECORDS.

*Youngia japonica* (oriental false hawksbeard) -- *Ferrisia virgata* (Cockerell), **striped mealybug**: A moderate infestation was found on half of 20 plants at a residence in Miami (Miami-Dade County; E2008-695; Olga Garcia; 7 February 2008). NEW DPI HOST RECORD.

#### NATIVE AND NATURALIZED PLANTS:

*Chiococca alba* (snowberry, West Indian milkberry) -- *Pseudoparlatoria parlatorioides* (Comstock), **false parlatoria scale**: A slight infestation was found in a vacant lot in Miami (Miami-Dade County; E2008-536; Olga Garcia; 3 February 2008). NEW DPI HOST RECORD.

*Herissantia crispa* (bladdermallow) -- *Phenacoccus solenopsis* Tinsley, **solenopsis mealybug**: A slight infestation was found along a roadside in Big Pine Key (Monroe County; E2008-475; Julieta Brambila, USDA/APHIS/PPQ; 24 January 2008). NEW DPI HOST RECORD.

*Sisyrinchium angustifolium* (narrowleaf blue-eyed grass) -- *Chorizococcus rostellum* nr. (Hoke), **a mealybug**: A slight infestation was found on roots of plants at a nursery in Gainesville (Alachua County; E2008-123; Cheryl A. Jones, Christine A. Zamora, Stephen R. Jenner and Kelly K. Douglas; 9 January 2008). NEW DPI HOST RECORD.

**FEDERAL AND STATE PLANT PROTECTION AND QUARANTINE PROGRAMS:**

*Bactrocera correcta* (Bezzi), **guava fruit fly**: A specimen was found in a Jackson trap in *Citrus x paradisi* (grapefruit) at a residence in Orlando (Orange County; E2008-1049; Terrence D. Williams, USDA/APHIS/PPQ, Orlando; 29 February 2008). The guava fruit fly is a serious fruit pest in South and Southeast Asia. It has been detected numerous times in California since 1986 and in Florida since 1999. This is the first recurrence in Florida since 2002. In response, the density of fruit fly detection traps will be increased over an 81-square mile area to determine if a breeding population may be present. Typically, only a single fly is ever detected (Dr. Gary J. Steck).



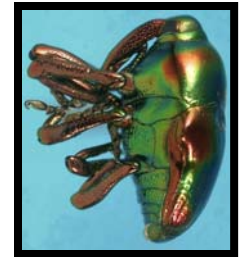
*Bactrocera correcta*.  
Photograph courtesy of Jeff Lotz, DPI

**ARTHROPOD DETECTION:**

*Dolichomiris linearis* Reuter, **a plant bug**: A specimen was found in a multi-lure trap in a business landscape in Sunny Isle (Miami-Dade County; E2008-911; Olga Garcia; 18 February 2008). **NEW DPI COUNTY RECORD.**

*Dryadaula terpsichorella* (Busck), **dancing moth**: Specimens were found at a residence in Jacksonville (Duval County; E2007-4303; homeowner; 11 June 2007). **NEW FLORIDA STATE RECORD.** This moth probably originally from the Pacific Islands, where it is known from Hawaii, Fiji and Rapa. It has been introduced into California. They are not reported to be important economically. The larvae feed on plant debris, for example, in Hawaii, they feed mainly on old leaves of pandanus, banana and sugar cane. (Dr. John B. Heppner).

*Eurhinus magnificus* (Gyllenhal), **a weevil**: A specimen was found in a grove in Vero Beach (Indian River County; E2008-204; Matthew G. Hentz, USDA/ARS; 31 October 2007). **NEW DPI COUNTY RECORD.** This is the northernmost record for this species (Dr. Michael C. Thomas).



*Eurhinus magnificus*  
Photograph courtesy of  
Michael C. Thomas, DPI

*Heterobostrychus aequalis* (Waterhouse), **a bostrichid beetle**: Specimens were intercepted from wood crating from India in a tile warehouse in Orlando (Orange County; E2008-636; Adam J. Silagyi and Brian D. Saunders, USDA/APHIS/PPQ; 7 February 2008). This Asian beetle is established in Florida, but so far, populations have not been established in Orange County (Dr. Michael C. Thomas).

*Leucophenga varia* (Walker), **a drosophilid fly**: A specimen was found in a Jackson trap in *Quercus* sp. (oak) along a roadside in the Baseball City Sports Complex, Davenport (Polk County; E2008-652; Robert Longtin, USDA/APHIS/PPQ; 5 February 2008). **NEW DPI COUNTY RECORD.**

*Murricia uva* Foord, **a two-tailed spider**: An adult male specimen was found in a multi-lure trap at a residence in North Miami (Miami-Dade County; E2008-773; Merlene Francois; 13 February 2008). **NEW RECORD FOR THE WESTERN HEMISPHERE.** Described *Murricia* species (in the family Hersiliidae) occur only in southern Asia and Africa; none are known from the New World. This species is central African in origin and is found from Cameroon to Kenya. Most records are from lowland forests, and this spider probably dwells on bark. There is one record from the Florida Keys of another species of hersiliid spider, *Yabisi habanensis* (Franganillo), also known from Cuba. A juvenile specimen taken 12 September 2007 from a Jackson trap in Davie (Broward County; E2007-



*Murricia uva*  
Photograph courtesy of G.B.  
Edwards, DPI

6803; John Pieper, USDA/APHIS/PPQ), previously thought to be *Y. habanensis*, was compared with the male reported here and is probably *M. uva*, indicating that this species is established in the state. Since juveniles cannot reliably be determined to species, the adult specimen is considered the official record (Dr. G.B. Edwards).

*Mycetobia divergens* Walker, **an anisopodid fly**: A specimen was found in a Jackson trap in *Citrus x paradisi* (grapefruit) at a residence in Haines City (Polk County; E2008-330; Robert Longtin, USDA/APHIS/PPQ; 15 January 2008). NEW DPI COUNTY RECORD.

*Ocyptamus fuscipennis* (Say), **a flower fly**: A specimen was found in a Jackson trap at a residence in Longwood (Seminole County; E2008-487; Eugene M. Monaghan, USDA/APHIS/PPQ; 28 January 2008). NEW DPI COUNTY RECORD.

*Ocyptamus parvicornis* (Loew), **a flower fly**: A specimen was found in a multi-lure trap at a residence in Lake Mary (Seminole County; E2008-488; Eugene M. Monaghan, USDA/APHIS/PPQ; 29 January 2008). NEW DPI COUNTY RECORD.

*Zaprionus indianus* Gupta, **a drosophilid fruit fly**: A specimen was found in a Jackson trap at a residence in LaBelle (Hendry County; E2008-111; Lorrie R. Rigby; 4 January 2008). NEW DPI COUNTY RECORD.

*Zodarion* sp., **a spider**: Two specimens were found at a location in Big Pine Key (Monroe County; E2008-571; Julieta Brambila, USDA/APHIS/PPQ; 24 January 2008). NEW RECORD FOR THE WESTERN HEMISPHERE. The family Zodariidae is not native to Florida and only one genus (*Lutica*) is native to the west coast of North America. The genus *Zodarion* is native to the Old World. *Zodarion rubidum* Simon was introduced into Colorado, Pennsylvania, and Quebec. This is a different species (Dr. G. B. Edwards).



*Zaprionus indianus*  
Photograph courtesy of Sean McCann, University of Florida

**NEMATOLOGY SECTION**

**Compiled by Janete A. Brito, Ph.D and Renato N. Inserra, Ph.D**

A total of samples 3,046 (2,397 for morphological and 649 for molecular identifications) were processed in January-February 2008. Details are shown below:

<p><b>Certification and Regulatory Samples:</b>                  Multi-state Certification for National and International Export .....1,599                  California Certification .....527                  Pre-movement (Citrus Nursery Certification).....28                  Site or Pit Approval (Citrus Nursery and Other Certifications) .....24</p>	<p><b>Other Samples:</b>                  Plant Problems ..... 30                  Intrastate Survey, Random ..... 189</p> <p><b>Molecular Identifications*</b> ..... 649</p> <p><small>*The majority of these analyses involved root-knot nematode species</small></p>
--	---

**Nematodes of Special Interest**

Nematodes of special interest detected and/or identified in January-February 2008:

*Bromelia* sp. (bromeliad) - *Pratylenchus scribneri* Steiner in Sherbakoff & Stanley, 1943, **Scribner's lesion nematode** was infecting the roots of this ornamental (Dade County, N08-00143, Karen W. LeBoutillier, 4 February 2008). There is a lack of information on possible effects of infection by this root lesion nematode on bromeliads.

*Livistona chinensis* (Chinese fan palm) - *Meloidogyne arenaria* (Neal, 1889) Chitwood, 1949, **peanut root-knot nematode** was infecting the roots of this ornamental palm (Hamilton County, N07-01628, Janie M. Echols, 20 December 2007). The root-knot nematode-infected palms were stunted and chlorotic.



**COLLECTORS SUBMITTING FIVE OR MORE SAMPLES THAT WERE PROCESSED FOR NEMATOLOGICAL ANALYSIS DURING JANUARY - FEBRUARY 2008**

Anderson, James L. ....201	Ochoa, Ana L. ....127
Bailey, Wayne W. ....32	Pate, Jo Ann .....78
Distelberg, Susan C. ....9	Qiao, Ping. ....148
Edenfield, Carrie S.....56	Salisbury, Thomas L.....126
LeBoutillier, Karen W. ....177	Spriggs, Charles L.....150
Looker, Sol F. ....7	Tannehill, Ellen J. ....7

## PLANT PATHOLOGY

### Compiled by Robert M. Leahy

For this period, the Plant Pathology Section received and processed 1,397 specimens. These included 524 pathology, 22 bee, 672 citrus greening, 25 soil and one water sample. No full pathogenicity tests for citrus canker were performed, but visual examinations were conducted for 16 samples from Southeast Florida, 14 from Central Gulf Coast Florida, 36 from Southwest Gulf Coast Florida, 76 from Central Florida and 11 from North Florida.

#### ORNAMENTALS, WOODY PLANTS AND PALMS:

*Camellia sasanqua* (sasanqua camellia) – *Phytophthora ramorum*, **Ramorum blight**: Collected at a nursery in Tallahassee, Leon County (14 January 2008, Michael Bentley, P2008-12445).

*Loropetalum chinense* (fringe bush, loropetalum) – *Phytophthora ramorum*, **Ramorum blight**: Collected at a nursery in Tallahassee, Leon County (5 February 2008, Michael Bentley, P2008-12862). NEW HOST RECORD.

*Phoenix dactylifera* (date palm) – *Thielaviopsis* sp., **trunk rot**: Collected at a nursery in Destin, Okaloosa County (25 January 2008, William L. Robinson, P2008-12697).

*Viburnum odoratissimum* (sweet arrowwood; sweet viburnum) – *Phytophthora ramorum*, **Ramorum blight**: Collected at a nursery in Tallahassee, Leon County (4 February 2008, Michael Bentley, P2008-12803).

*Viburnum tinus* (laurustinus) – *Phytophthora ramorum*, **Ramorum blight**: Collected at a nursery in Tallahassee, Leon County (24 January 2008, Michael Bentley, P2008-12651). NEW HOST RECORD.

*Zanthoxylum beecheyanum* (Chinese pepper, Sichuan pepper) – *Pythium splendens*, **root rot**: Collected at a nursery in Delray Beach, Palm Beach County (30 January 2008, Susan Halbert, P2008-12734). NEW HOST RECORD.

#### ORNAMENTALS, FLOWERING PLANTS:

*Glandularia canadensis* (verbena, rose mock vervain) – potyvirus, **virus** (not yet named): Collected at a dooryard in Green Cove Springs, Clay County (14 January 2008, Sol F. Looker, P2008-12478).

